

PROMET

Feel Safe ■

PRODUCT CATALOGUE

BOOS.GR

262, Mesogeion Ave.
PC 155 62 Holargos, Greece
T. +30 210 654 9590
E. info@boos.gr

DOUBLE DOOR SAFES



Double door Safes

series: **Brandmauer**

VALBERG

YOU GOT MORE

3 LAYER
MULTI
EFFECT

MULTI
LAYER SYSTEM

FACTORY
30
minutes
TESTED

GRADE S2
IMP
certified



BM 1951

Model									
BM 1220	1220	930	520	1050	820	405	2	80	349
BM 1260	1220	600	520	1082	506	420	2	71	211
BM 1993	1950	930	520	1800	820	420	4	142	638
BM 1951	1950	1250	520	1800	1140	405	4	180	822

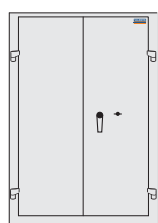


Key lock
Kaba 71111

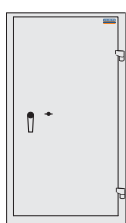


Digital lock
Grade B (PS-600)

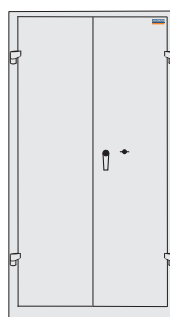
The outer depth is given without the handle and the lock.



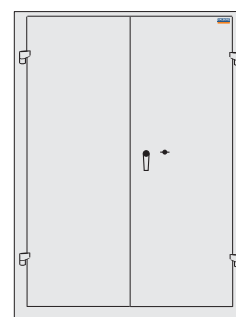
BM 1220



BM 1260



BM 1993



BM 1951

- Double wall construction, the gap between the inner and outer walls is filled with heat insulating material which protects the contents from fire.
- Door opening angle up to 180 degrees due to external hinges.
- Accessories: Inner compartment, telescopic shelf, telescopic frame.
- Three point locking mechanism, 5 bolts 20 mm in diameter.
- Thickness of door – 60mm.
- Standard delivery with double-bit high security key lock with two keys + handle.
- Maximal shelf load – 40 kg
- Color: RAL 7035 (light grey), also available in RAL 7024 (grey graphite).

Double door Safes

series: **FSB**
grade: **S2, LFS 60P**

YOU GOT MORE

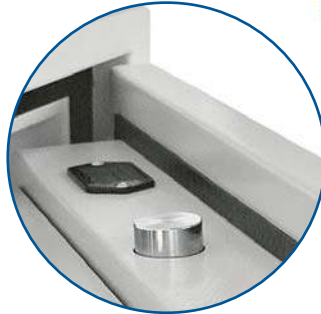


MULTI LAYER SYSTEM

VALBERG



FSB 1993



Model											
FSB 12130	1200	1250	585	1030	1110	390	2	7	440	445	
FSB 19130	1950	1250	585	1785	1110	390	4	9	650	773	
FSB 1993	1950	940	585	1760	801	392	4	9	558	553	

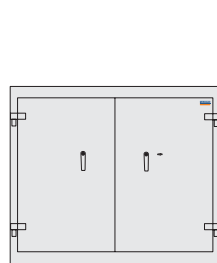


Key lock
Kaba 71111



Digital lock
Grade B (PS-600)

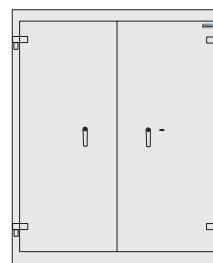
The outer depth is given without the handle and the lock.



FSB 12130



FSB 1993



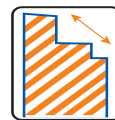
FSB 19130

- Burglary resistance – S2 according to EN 14450.
- Fire resistance – LFS 60P according to EN 15659.
- Thickness of door - 105 mm.
- Thickness of walls - 77 mm, rear wall – 51 mm.
- The safe body and door are manufactured with two inter-welded walls that are filled with fire resistant concrete.
- Maximal shelf load – 40 kg
- Three way locking bolts.
- Accessories: Inner compartment, telescopic shelf, telescopic frame.
- Integrated relocker, lock secured from drill attacks.
- Standard delivery with double-bit high security key lock with two keys.
- Anchoring to the floor.
- Color: RAL 7035 (light grey), also available in RAL 7024 (grey graphite).

Double door Safes

series: **Garant**
grade: **I, LFS 60P**

VALBERG



YOU GOT MORE



GARANT 1993

Model										
Garant 1993	1950	940	585	1760	801	392	4	13	658	553

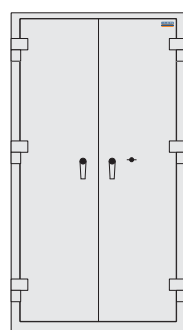
The outer depth is given without the handle and the lock.



Key lock
Kaba 71111



Digital lock
Grade B (PS-600)



GARANT 1993

- Burglary resistance – EN 1143-1, Grade I.
- Fire resistance – LFS 60P according to EN 15659.
- The safe body and door are manufactured with two inter-welded walls that are filled with fire resistant concrete.
- Thickness of door – 110 mm
- Thickness of walls – 80 mm
- Accessories: Inner compartment, telescopic shelf, telescopic frame.
- Three way locking bolts. Double vertical bolts.
- Integrated relocker, lock secured from drill attacks.
- Standard delivery with double-bit high security key lock with two keys.
- Maximal shelf load – 40 kg
- Anchoring to the floor.
- Color: RAL 7035 (light grey), also available in RAL 7024 (grey graphite).